

# State of Wyoming Corner Record

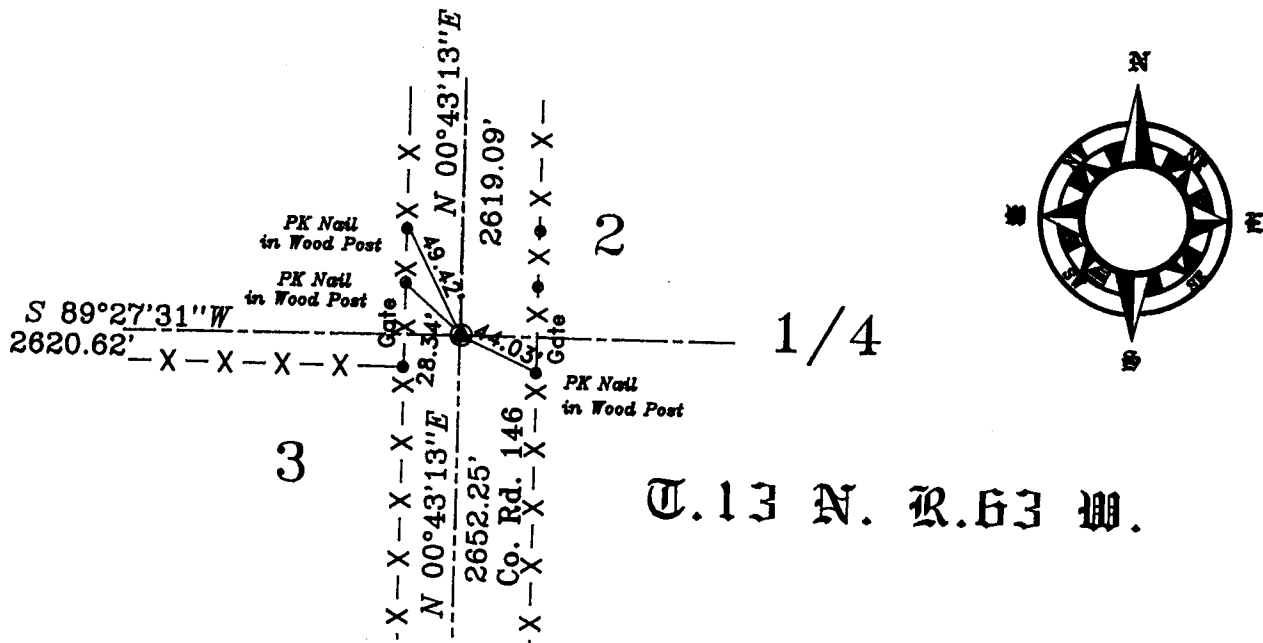
(In compliance with the *CORNER PERPETUATION AND FILING ACT*, Wyoming Statutes, 1997, Section 33-29-140, et seq., and the Rules and Regulations of the Board of Registration for Professional Engineers and Professional Land Surveyors)

Reverse side of this form may be used if more space is needed.

Record of original survey and citation of source of historical information (if corner is lost or obliterated). Description of corner monumentation evidence found and/or monument and accessories established to perpetuate the location of this corner. Sketch of relative location of monument, accessories, and reference points with course and distance to adjacent corner(s) (if determined in this survey). Method and rationale for reestablishment of lost or obliterated corner.

Survey performed by Alfred M. Rogers, contracted 20 May 1871, Survey Township from 31 May to 6 June 1871.  
 "North on a random line between Sections 2 & 3, Var. 15°39' East, 40.00 chains set a stone for Temporary 1/4 Corner, 79.50 chains intersect North boundary of Township 35 links West of the Section Corner of Section 2 & 3 from which I run S00°15'W on a true line between Sections 2 & 3 39.50 chains, set a White Sandstone 18"X7"X6" for 1/4 corner"

Searched for Corner, but not found. Set 5/8"X28" rebar with 3-1/4 Aluminum Cap in County Road Number 146, West 44.03 feet from a PK nail in a Cedar gate post on the Easterly R/W of said County Road, SW 28.34 feet from a PK nail in the Northerly gate post of a fbarbwire fence on the Westerly R/W of County Road 146 and 49.42 feet from a PK nail set on a wooden line post in said barbedwire fence. This 1/4 corner was re established by the single proportionment method as perscribed in the 1973 BLM manual.



Date of Field Work: \_\_\_\_\_ Office Reference: \_\_\_\_\_

### CROSS INDEX DIAGRAM

	1	2	3	4	5	6	7	8	9	10	11	12	13	14	15	16	17	18	19	20	21	22	23	24	25
A																									
B																									
C																									
D																									
E																									
F																									
G																									
H																									
J																									
K																									
L																									
M																									
N																									
O																									
P																									
Q																									
R																									
S																									
T																									
U																									
V																									
W																									
X																									
Y																									
Z																									

Land Surveyor / Firm / Address

Terrestrial Surveying & Mapping Co.  
 1127 Terry Ranch Road  
 Cheyenne, Wyoming 82007

Telephone: 307 634 9360

This corner record was prepared by me or under my direction and supervision.  
 SEAL & SIGNATURE



Corner Name: 1/4 common to Sections : 2 & 3 of T.13 N. R. 63 W. of the 6th P.M.  
 March 1994; PLSW January 1998

Cross-Index No.: 17 ~ C SBRPEPLS/PLSW: